



G A R V E Y S C H U B E R T B A R E R
A PARTNERSHIP OF PROFESSIONAL CORPORATIONS

WASHINGTON, D.C. OFFICE
fifth floor
flour mill building
1000 potomac street nw
washington, d.c. 20007-3501
TEL 202 965 7880 FAX 202 965 1729

OTHER OFFICES
beijing, china
new york, new york
portland, oregon
seattle, washington
GSBLAW.COM

Please reply to JOHN CRIGLER
jcrigler@gsblaw.com TEL EXT 2521

March 14, 2008

FILED/ACCEPTED

MAR 14 2008

Our File No. 20832-00102

Marlene H. Dortch, Secretary
Federal Communications Commission
Office of the Secretary
c/o Natek, Inc.
236 Massachusetts Avenue, NE, Suite 110
Washington, DC 20002

Federal Communications Commission
Office of the Secretary

STAMP & RETURN

Re: Notice of Operation at Reduced Power
Radio Station KPCC(FM)
Facility Id. No. 51701

Dear Ms. Dortch:

On behalf of Pasadena Area Community College District ("PACCD"), licensee of noncommercial educational FM station KPCC, 89.3 MHz, Pasadena, California, I hereby give notice, pursuant to Sections 73.1680 and 73.1692 of the Commission's Rules, that Station KPCC is temporarily operating with an emergency antenna located at a lower than authorized center of radiation.

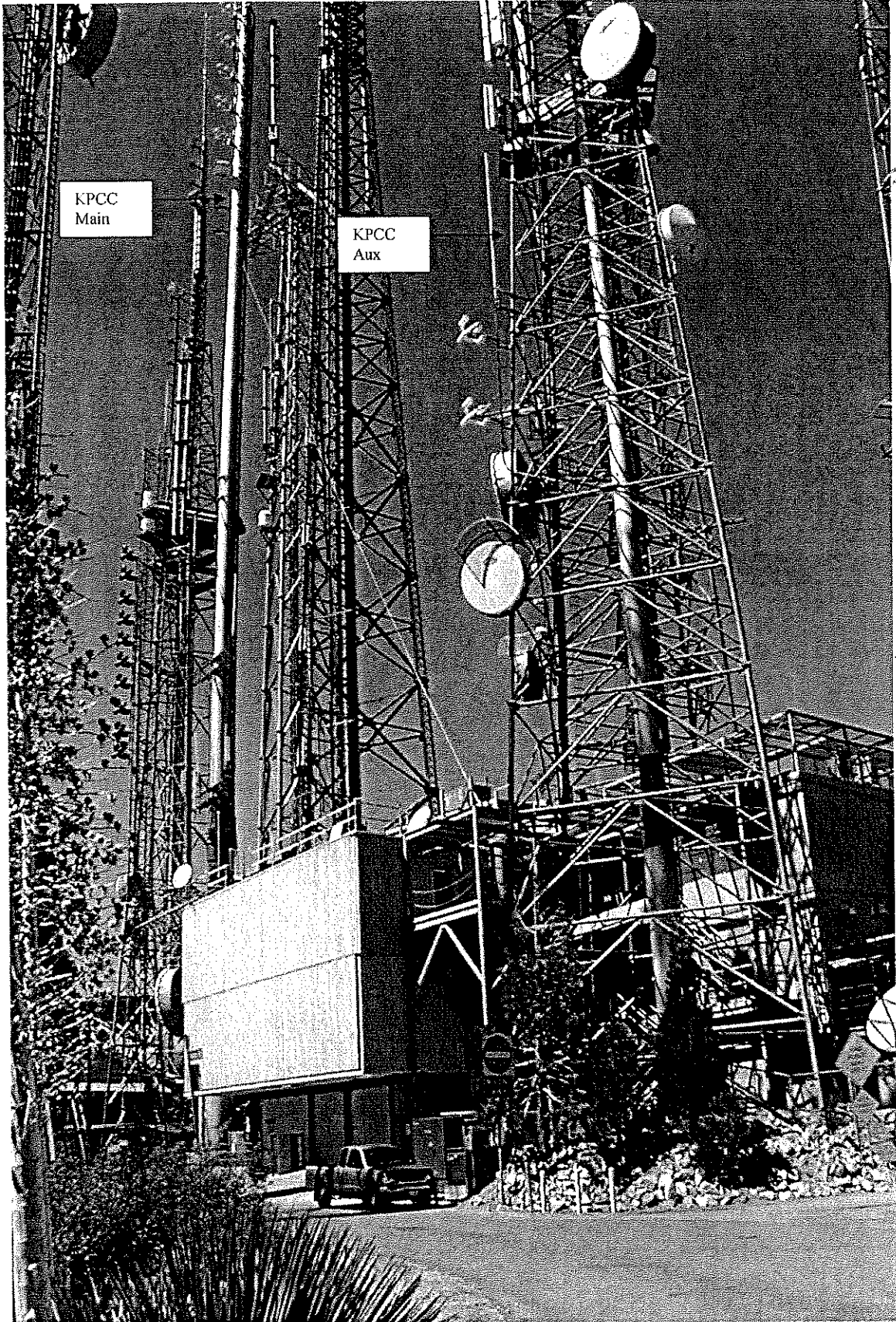
KPCC broadcasts from a transmitter site located on Mt. Wilson. Ice storms in January damaged the antenna, which became inoperable on March 10, 2008. Since March 10, the station has operated with a whip antenna located approximately 80 feet above ground on an adjacent tower (ASRN 1007719) with the same coordinates as the authorized transmission site. See attached photo. At current operating values, the service area and interfering contours of KPCC do not exceed licensed values.

PACCD plans to replace the antenna and return to licensed operations, perhaps as early as today, but will request special temporary authority if it can not return to normal operations by March 20, 2008.

Respectfully submitted,


John Crigler

JC:cll
cc: Norm Miller (via email)



KPCC
Main

KPCC
Aux